

# Explore Kelvingrove



Name: \_\_\_\_\_

Collect a floorplan from the enquiry desk to help you find the West Court, which is Blue on your floorplan

## Animal Safari



Find the tall **Giraffe**

Its pattern would help it become **camouflaged** amongst trees in the wild.



Q. What would it eat?

A. \_\_\_\_\_



Q. How high can it reach?

A. \_\_\_\_\_



Add some camouflage patterns to this Giraffe sketch to help it hide from predators



Find **2** other animals with camouflage...

1. \_\_\_\_\_



2. \_\_\_\_\_



## Antarctica

Find the **four** species of Penguin in the display case. They all have unusual names and look a bit different.

**Draw the penguin above the name.**



King

Gentoo

Rockhopper

Chinstrap

1

Now let's head upstairs to find some armour!



## Conflict and Consequences



Q. How many arrows are hanging from the ceiling?



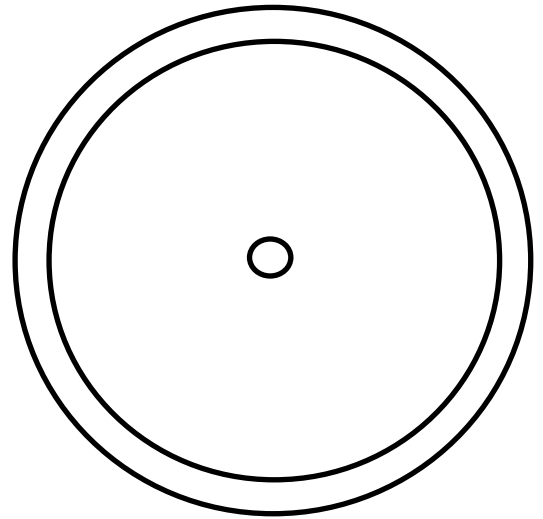
A. 



Find a knight with a feather on their helmet. Armour was fashionable!



Design your own fashionable shield by drawing on the circle shape

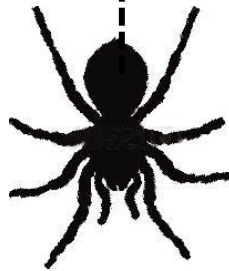


Escape past swords into the sights and sounds of the **rainforest in Object Cinema!**

## Object Cinema



Stand on the **spider** image on the floor. Look into the cabinet to see a **huge spider!**



Hop past the **frog** on the floor. Push the button beside the cabinet on the wall to illuminate amazing insects inside!



Q. What is the name of the spider?

A. \_\_\_\_\_

Q. How many **butterflies** can you see?

A. \_\_\_\_\_

1, 2, 3 . .



## Scotland's' First People



Walk through this gallery until you find a **ladder** on the wall.

This was found a long time ago in the river Clyde on a **Crannog**. **Crannogs were artificial islands on the water, made by people to live on.**

Come out to the **balcony**, turn **right**. Follow the **black and white floor** to the balcony on the **East side**, towards the floating heads . . .

