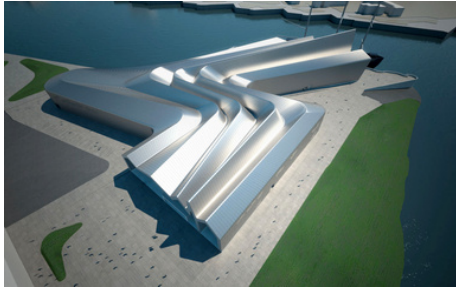


# Doon by the Riverside

Follow this outdoor trail and explore the river Clyde's past and present.

1



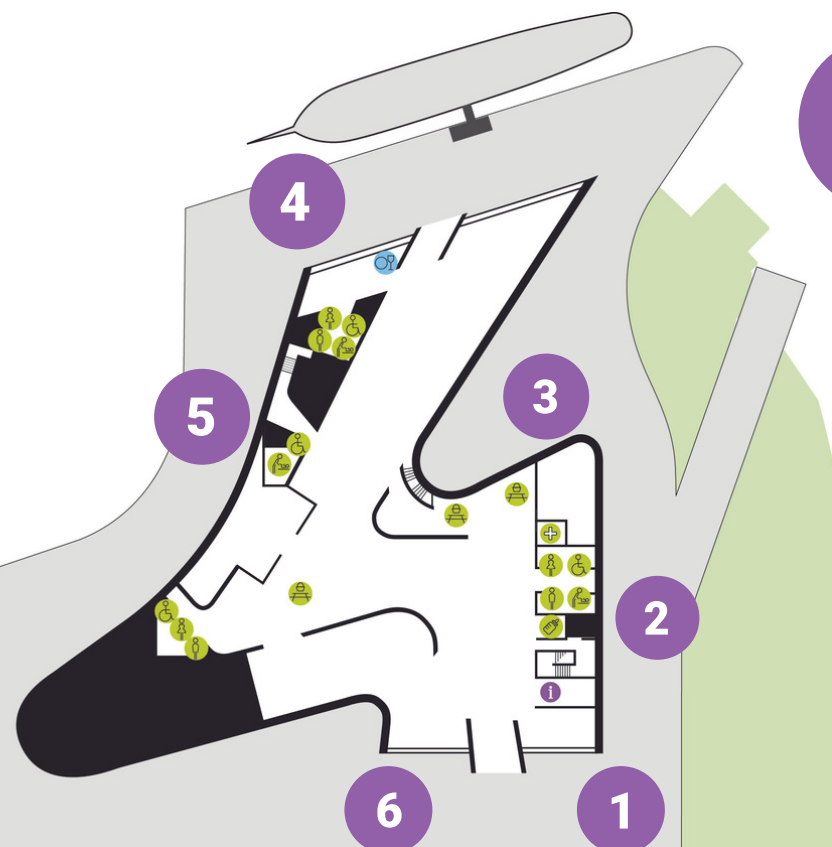
Zaha Hadid is the architect who designed the Riverside Museum. It was built with a zinc clad roof which has an unusual zig-zag design. Some people think that it is like the waves of the River Clyde. What do you think?

2

What are all these barriers about? There is a new Govan-Partick footbridge being built in here. The construction will take 2 years. This is the projection of how the bridge will look like when it is finished.

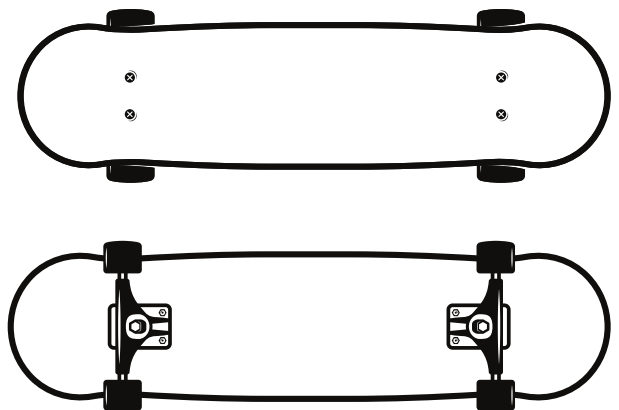


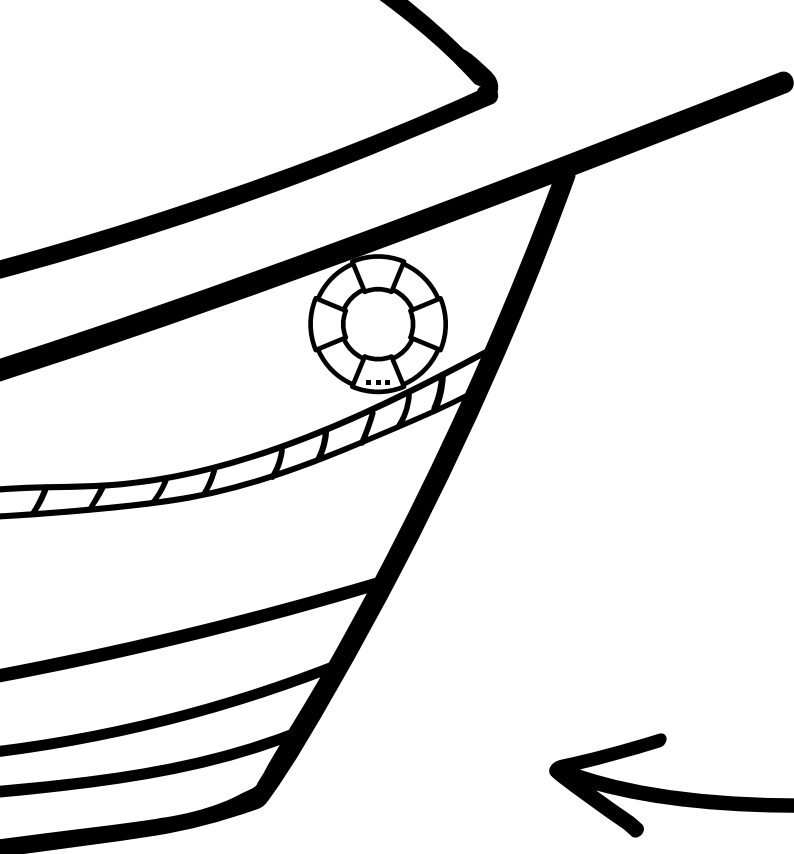
There is a total of 21 bridges across the Clyde in Glasgow. How many of them can you name?



3

The skatepark is a much loved outdoor facility here at the museum. Design a skateboard that you would like to use below.





4

The Tall Ship was launched here at the Clydeside in 1896. The Tall Ship had different names in its history - Islamount, Clarastella, Galatea and Glenlee.

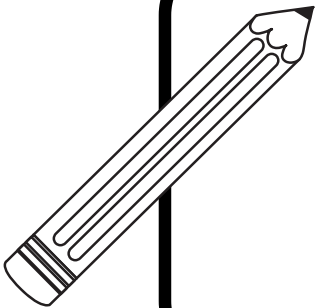
The original figurehead at the bow was lost a long time ago and replaced by the one you can see today.

You can design a new one in here!



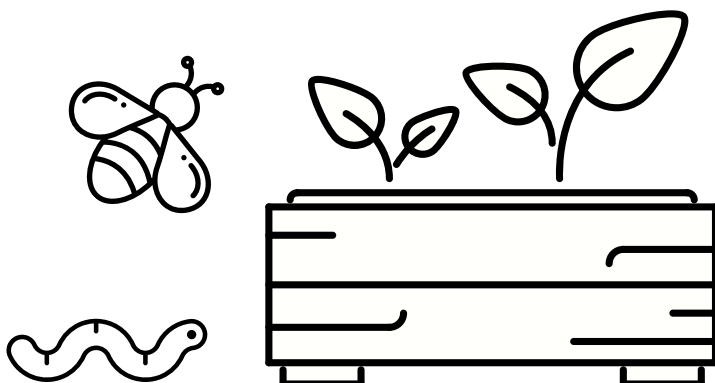
5

This view of the River Clyde has changed dramatically over the years. The River Clyde used to be so shallow you could walk across it! Over time the Clyde has been dredged and widened to help the shipping industry. Draw the landscape as it looks now in the box below. Do you recognise any of the buildings?



6

There are two pollinator-friendly planters at the front of the building. Can you see any insect around them? Colour in the picture below.



Can you spot all the bird-boxes on the trees around the museum?

