

## Gallery Guide

Welcome to the Gallery of Modern Art where you'll find a thought-provoking range of exhibitions, featuring local, national and international artists. Works on display include a variety of media such as painting, sculpture, printmaking, photography, video and installation. GoMA also explores contemporary issues through a major biennial social justice arts programme.

Housed in an elegant neo-classical building in the heart of Glasgow, GoMA's unique architecture offers many different spaces to explore art collected by the city, works on loan, and the results of collaborative projects between communities and artists. Displays change regularly but highlights from our back catalogue of exhibitions are featured on this floor plan.

At GoMA there is always something to do, from hands-on workshops to talks and events. For families, the Saturday Art Club offers an exciting introduction to various artistic methods and formats and allows young and old alike to develop their artistic potential.



For details of all our events and programmes, you'll find information in the main foyer or please ask one of the staff.

GoMA also has a roof-top education studio where our Learning and Access team run regular workshops, projects and artists talks. For more information contact the Learning and Access team on 0141 287 3059 or speak to a member of staff.

Finally, don't forget to visit the museum shop or take a break in the cafe on the lower ground floor. Also located here is the Library @ GoMA with free Internet access terminals, multimedia, art and general book-lending facilities.



Glasgow museums

GALLERY OF MODERN ART



For more information about GoMA or any of Glasgow Museums' 12 venues, please visit our website at [www.glasgowmuseums.com](http://www.glasgowmuseums.com).

Entry to GoMA has always been free. Donations at the donation box in the main foyer are welcome.

**If you have any queries during your visit please ask at the Enquiry Desk or ask any of our Visitor Assistants in the galleries.**

**We hope you enjoy your visit and look forward to seeing you again.**

#### Visiting GoMA

Monday to Wednesday 10am to 5pm, Thursday 10am to 8pm, Saturday 10am to 5pm, Friday and Sunday 11am to 5pm

#### By subway

Five minutes' walk from Buchanan Street and St Enoch Subway stations.

#### By rail

Five minutes' walk from Argyle Street and Queen Street rail stations and 10 minutes' walk from Central rail station.

#### Facilities

Free guided tours; gallery shop; cafe; male and female toilets; wheelchair access; nearby pay and display parking.

[www.glasgowmuseums.com](http://www.glasgowmuseums.com)

Royal Exchange Square | Glasgow, G1 3AH | Phone 0141 287 3050 | Fax 0141 287 3062 | Text phone 0141 287 3005

Culture  
& Sport



FREE

Welcome Bienvenue Willkommen Bienvenuto Benevenuti  
[www.glasgowmuseums.com](http://www.glasgowmuseums.com)

Glasgow museums

GALLERY OF MODERN ART

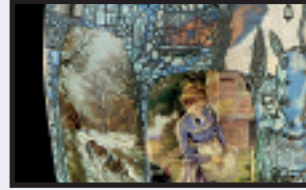
# floor plan



Colour plans and  
visitor information

## Recent Displays

At Gallery of Modern Art



Grayson Perry, Pot 2000



Jim Lambie, Forever Changes, 2008



Alan Davie, Cornucopia, 1960



Barbara Kruger, Social Justice, 2005



Simon Starling, Tabernas Desert Run, 2004



Toby Paterson, Black Elergy, 2004

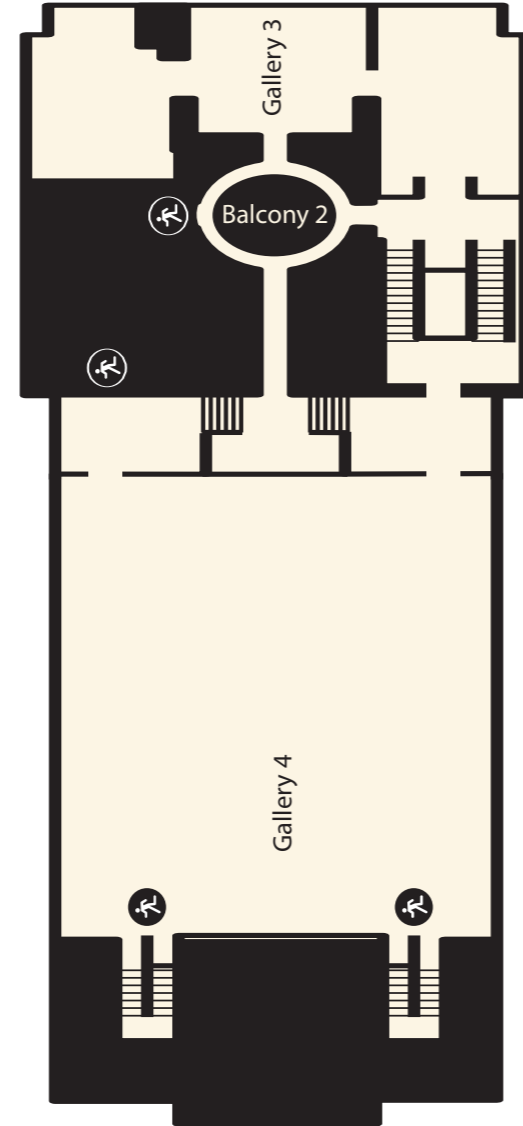
## Facilities



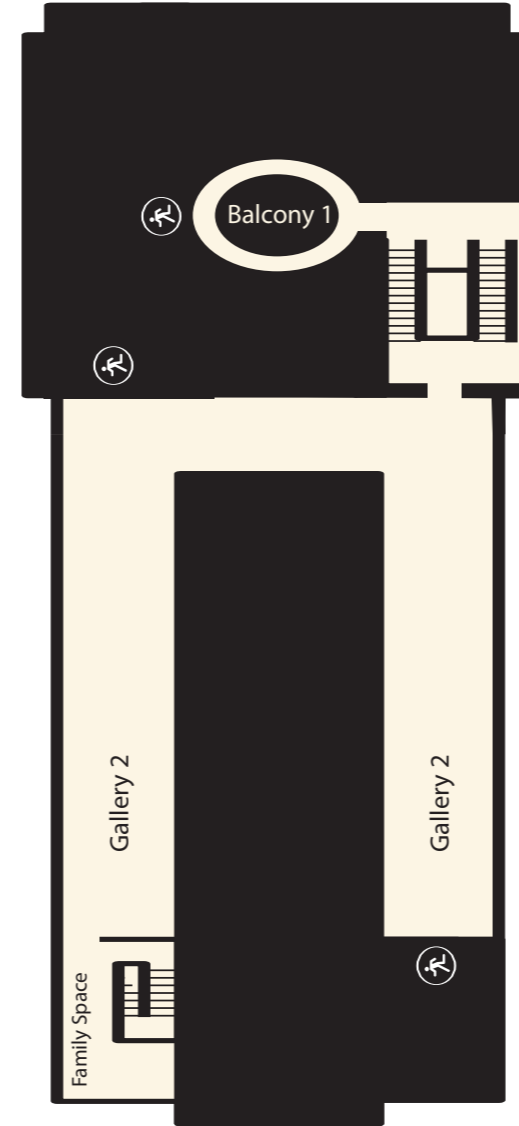
## Gallery Rules

- Please do not touch the objects on display.
- Food and drink may not be taken into the galleries, and smoking is not permitted anywhere in this building.
- You may take photographs for personal use only unless otherwise stated. Please contact Glasgow Museums Photo Library on 0141 287 2595 regarding photography for commercial purposes, or to order prints or photographs.
- When using a mobile phone, please have consideration for other visitors.
- Glasgow Museums staff have the right to work in a safe environment free from violence and threatening behaviour. The police may be asked to prosecute any visitor acting in a violent or abusive way.

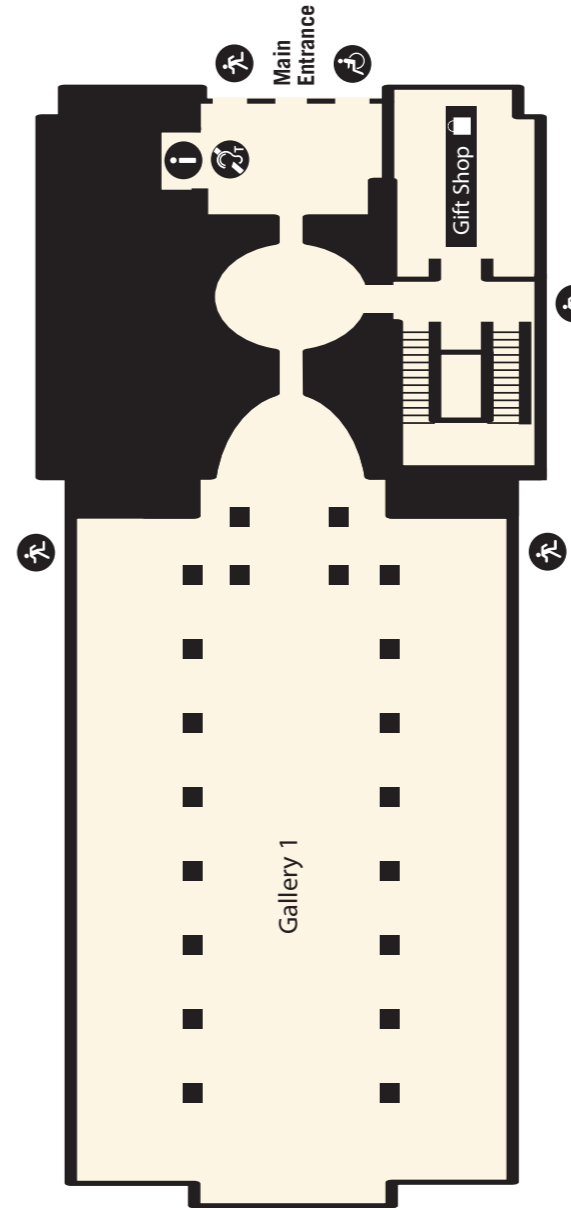
SECOND FLOOR



FIRST FLOOR



GROUND FLOOR



BASEMENT

